

HP Training



TOPICS

- ❖ Follow Me Print
- ❖ Integrated Scanning
 - Scan to Email
 - Scan to Google Drive
- ❖ Copy Function
- ❖ Fax Function

Training provided by:

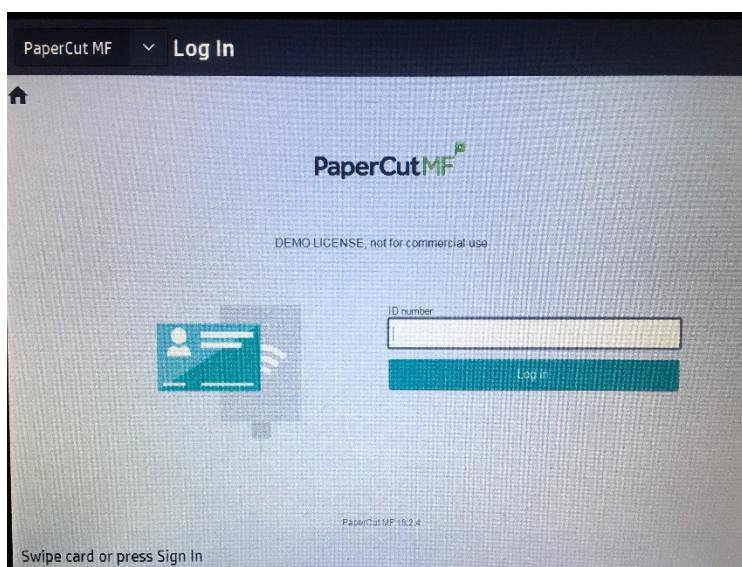


Follow Me Print

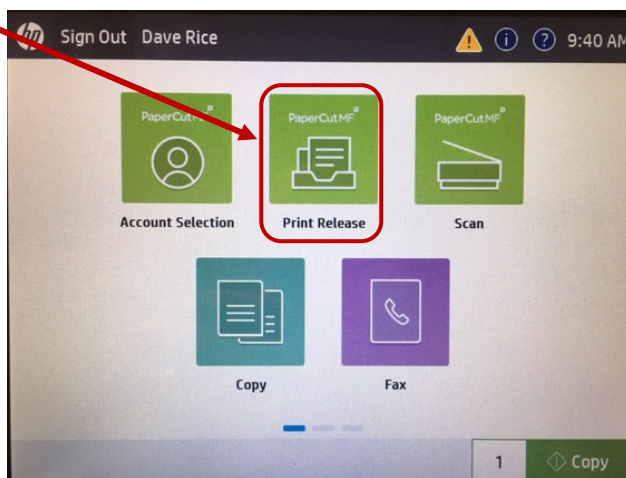
Follow Me printing allows you to **print SECURELY & CONFIDENTIALLY** at any **device within the facility** that is a printer/copier with a touch login screen.

How to use Follow Me Printing:

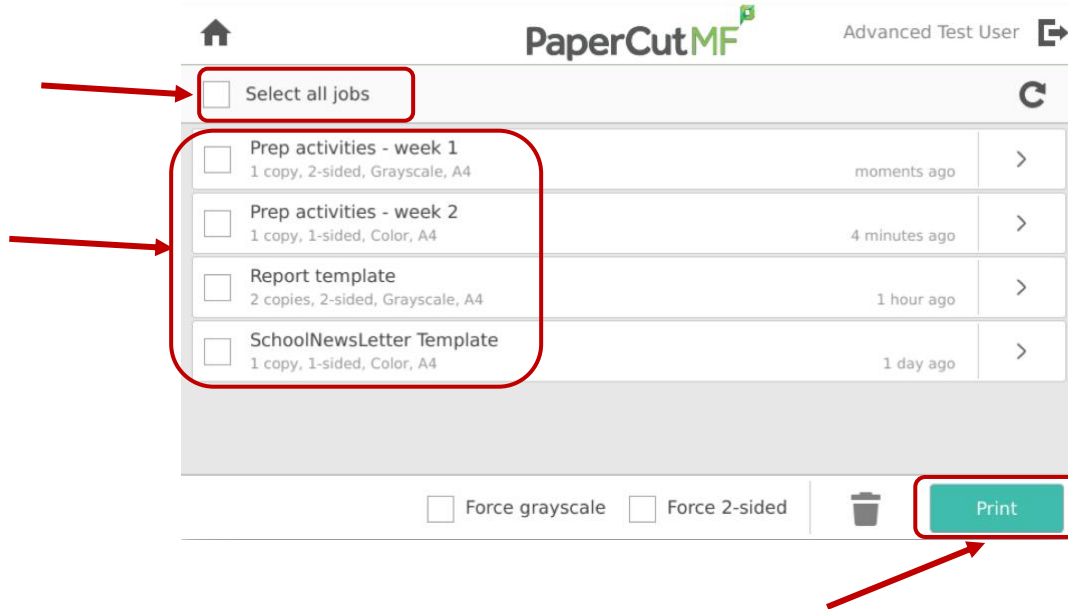
1. Go to File > Print.
2. Click on the drop down menu, select **Follow-Me-BW (Black & White)** or **Follow-Me-Color**, then **Print**.
No one else can access your print jobs when using Follow Me printing since you must login to access them.
3. **Release your document to print** from any printer/copier with a login screen:
 - Go to a multi-function device and Select **Paper Cut** to login.
 - Login with your user ID number.



- Select Print Release.



- Select your print job from the list displayed by Document Name or Select all jobs.
- Select Print to print your job(s).

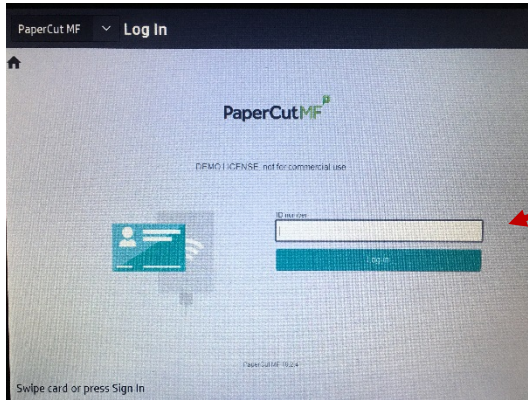


- To return to machine functions, press the home icon.



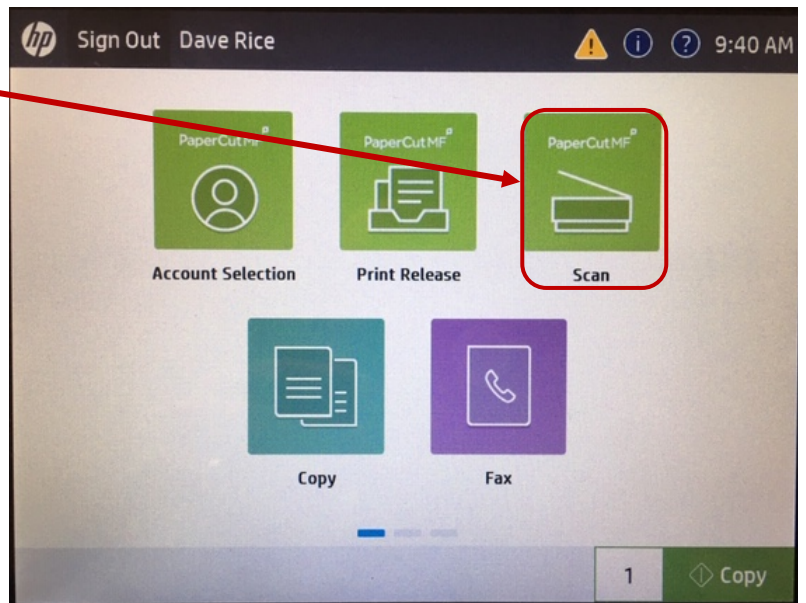
Integrated Scanning Scan to Email

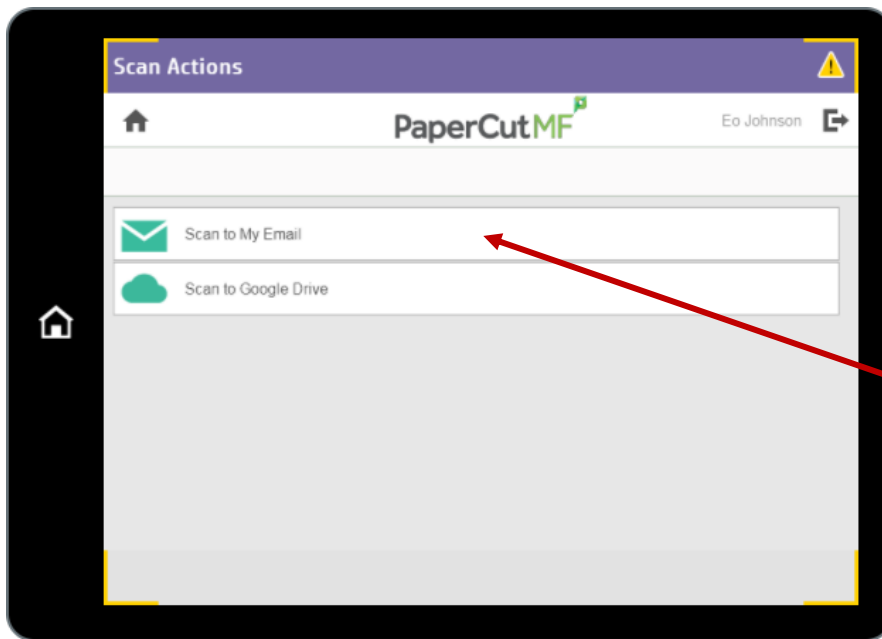
Using your **Pin Code** is necessary for printing and making copies. Your **Personal Pin Code is assigned to you**. Do not share it.



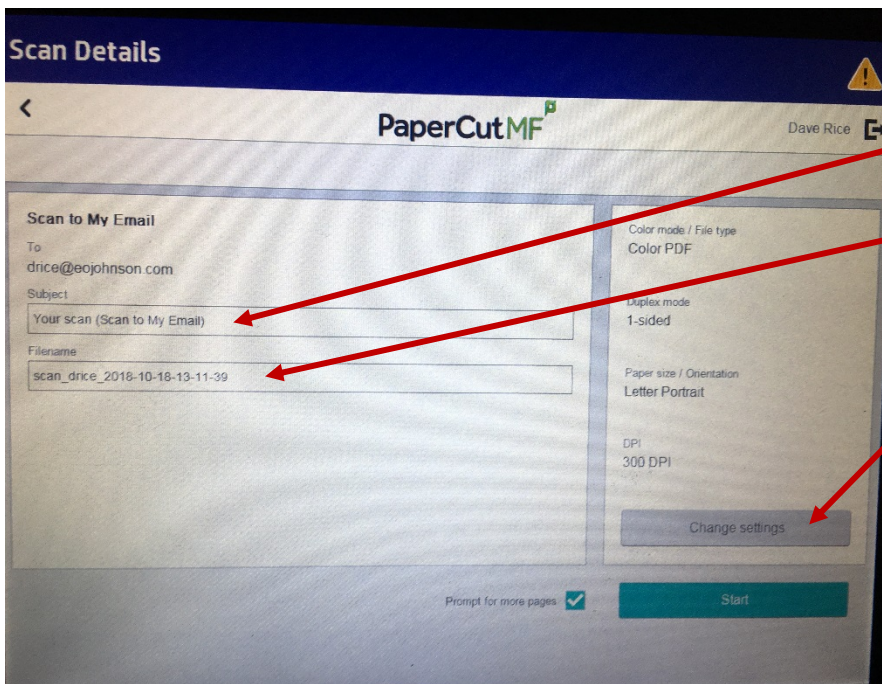
Login into PaperCut with your Pin Code.

- Select Scan.





Press Scan to Email



Here you can do the following:

- Type in your subject
- Type in File name
- Change Settings

Here you can do the following:

- Single or Double sided
- Orientation
- Paper Size
- File Type
- DPI
- Color Mode

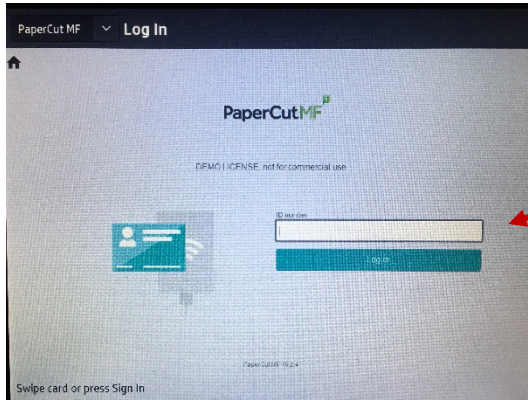
< Back Scan Settings Log Out

| | Originals | | Scan output |
|-------------|---|------------|--|
| Duplex mode | <input checked="" type="radio"/> 1-sided <input type="radio"/> 2-sided | File type | <input checked="" type="radio"/> PDF <input type="radio"/> JPEG <input type="radio"/> TIFF |
| Orientation | <input checked="" type="radio"/> Portrait <input type="radio"/> Landscape | DPI | <input type="radio"/> 100 <input type="radio"/> 200 <input checked="" type="radio"/> 300 <input type="radio"/> 600 |
| Paper size | <input type="radio"/> A3 <input checked="" type="radio"/> A4 <input type="radio"/> A5 | Color mode | <input checked="" type="radio"/> Color <input type="radio"/> Grayscale <input type="radio"/> B&W |

Start

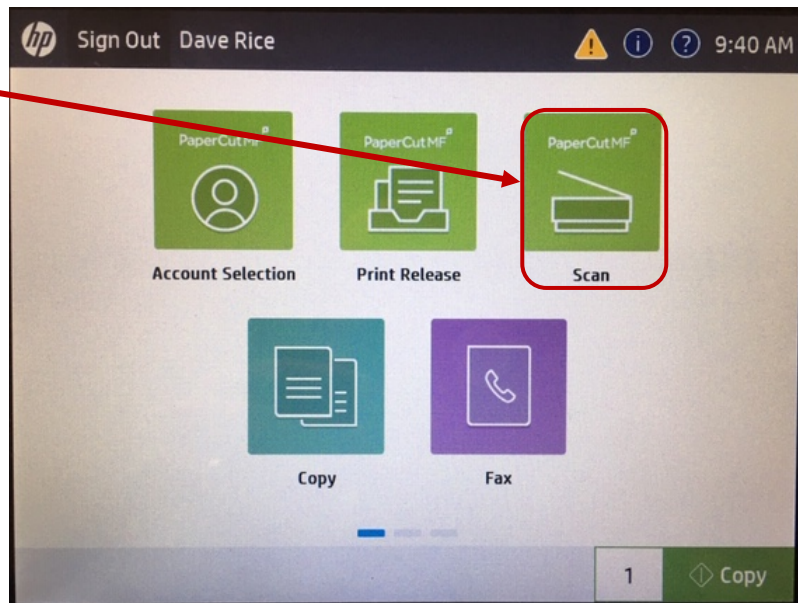
Integrated Scanning Scan to Google Drive

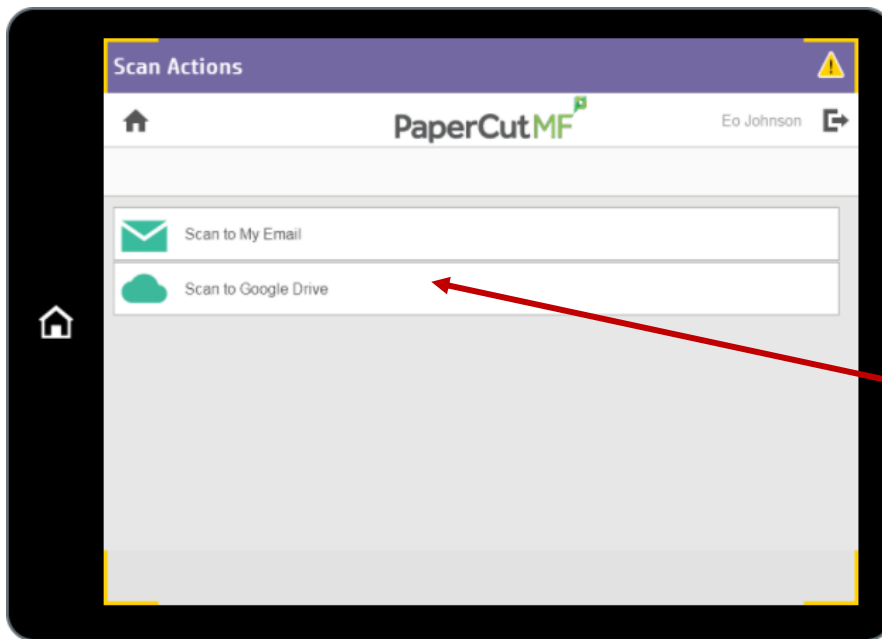
Using your **Pin Code** is necessary for printing and making copies. Your **Personal Pin Code is assigned to you**. Do not share it.



Login into PaperCut with your Pin Code.

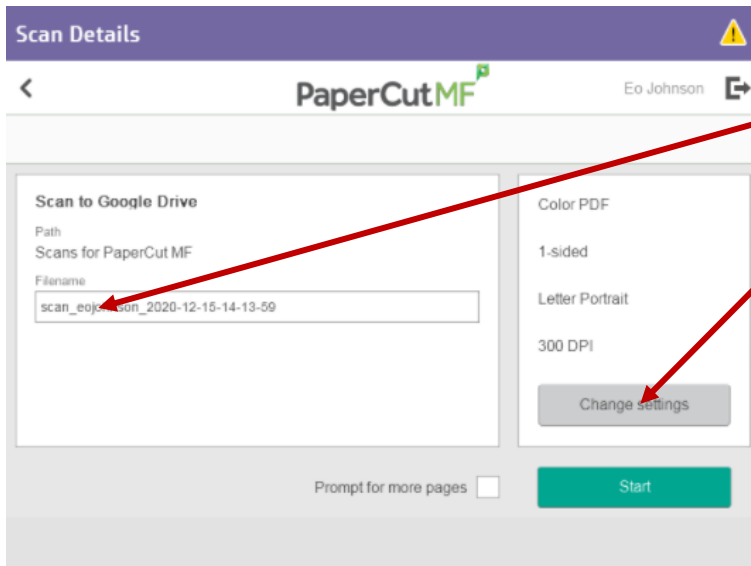
- Select Scan.





Press Scan to Google Drive

Here you can do the following:



- Type in File name

- Change Settings

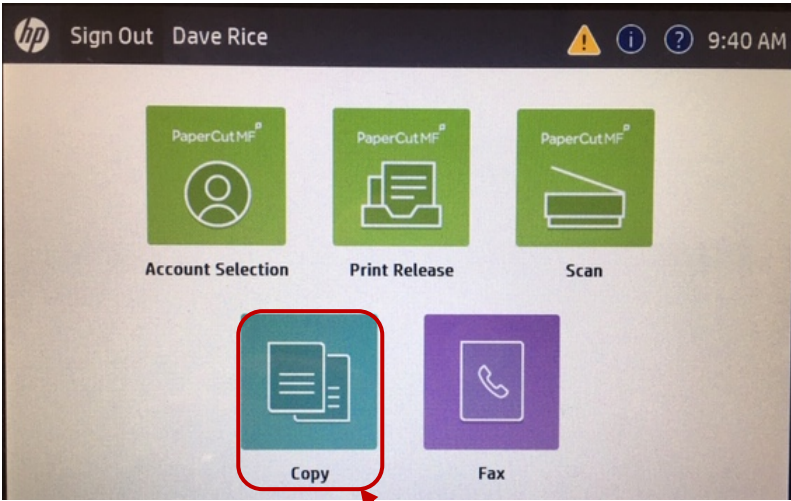
Here you can do the following:

- Single or Double sided
- Orientation
- Paper Size
- File Type
- DPI
- Color Mode

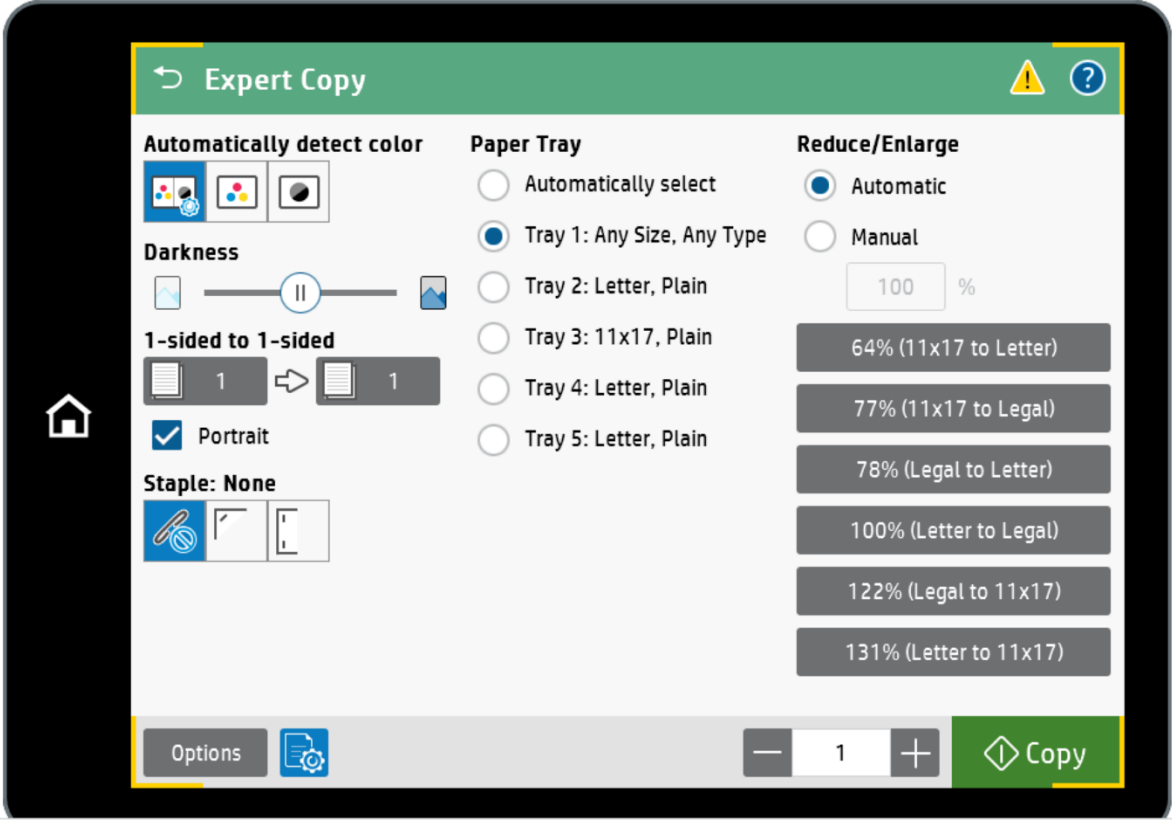
< Back Scan Settings Log Out

| | Originals | | Scan output |
|-------------|---|------------|--|
| Duplex mode | <input checked="" type="radio"/> 1-sided <input type="radio"/> 2-sided | File type | <input checked="" type="radio"/> PDF <input type="radio"/> JPEG <input type="radio"/> TIFF |
| Orientation | <input checked="" type="radio"/> Portrait <input type="radio"/> Landscape | DPI | <input type="radio"/> 100 <input type="radio"/> 200 <input checked="" type="radio"/> 300 <input type="radio"/> 600 |
| Paper size | <input type="radio"/> A3 <input checked="" type="radio"/> A4 <input type="radio"/> A5 | Color mode | <input checked="" type="radio"/> Color <input type="radio"/> Grayscale <input type="radio"/> B&W |

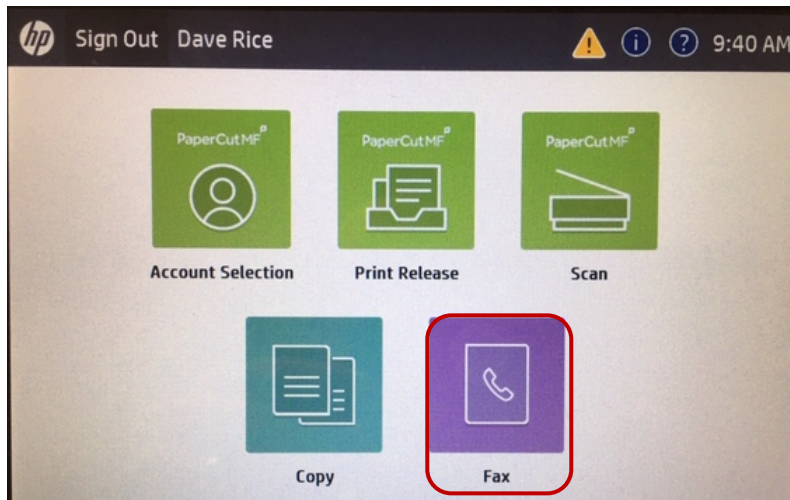
Copy Function



After logging in and selecting **Copy**, copier function will appear.



Fax Function



After logging in and selecting **Fax**, press the home key then the fax button.

Place document in feeder or on the glass. Enter fax number using the numeric key pad or select from programmed list.

Press Start

Fax Number:

